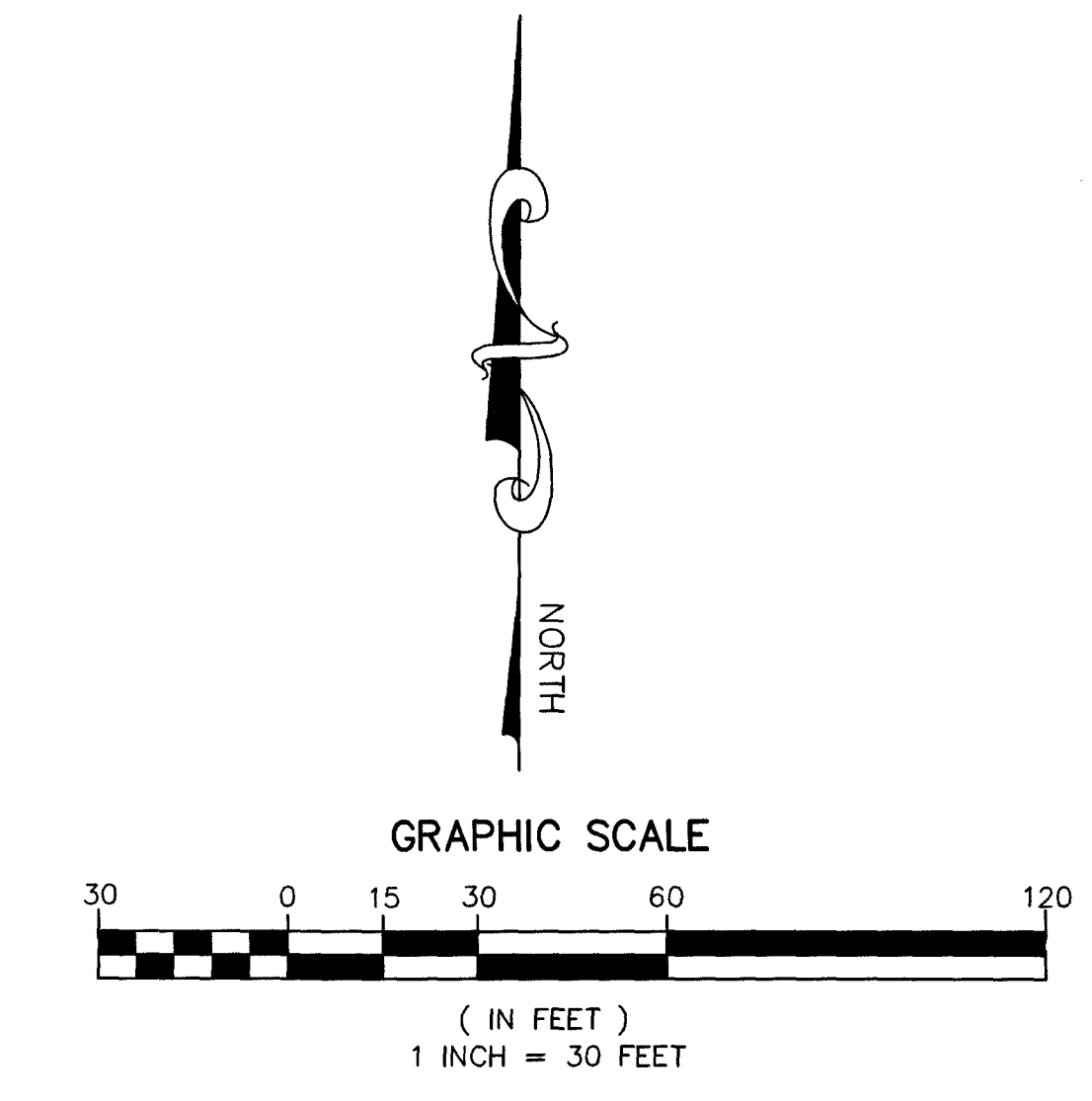
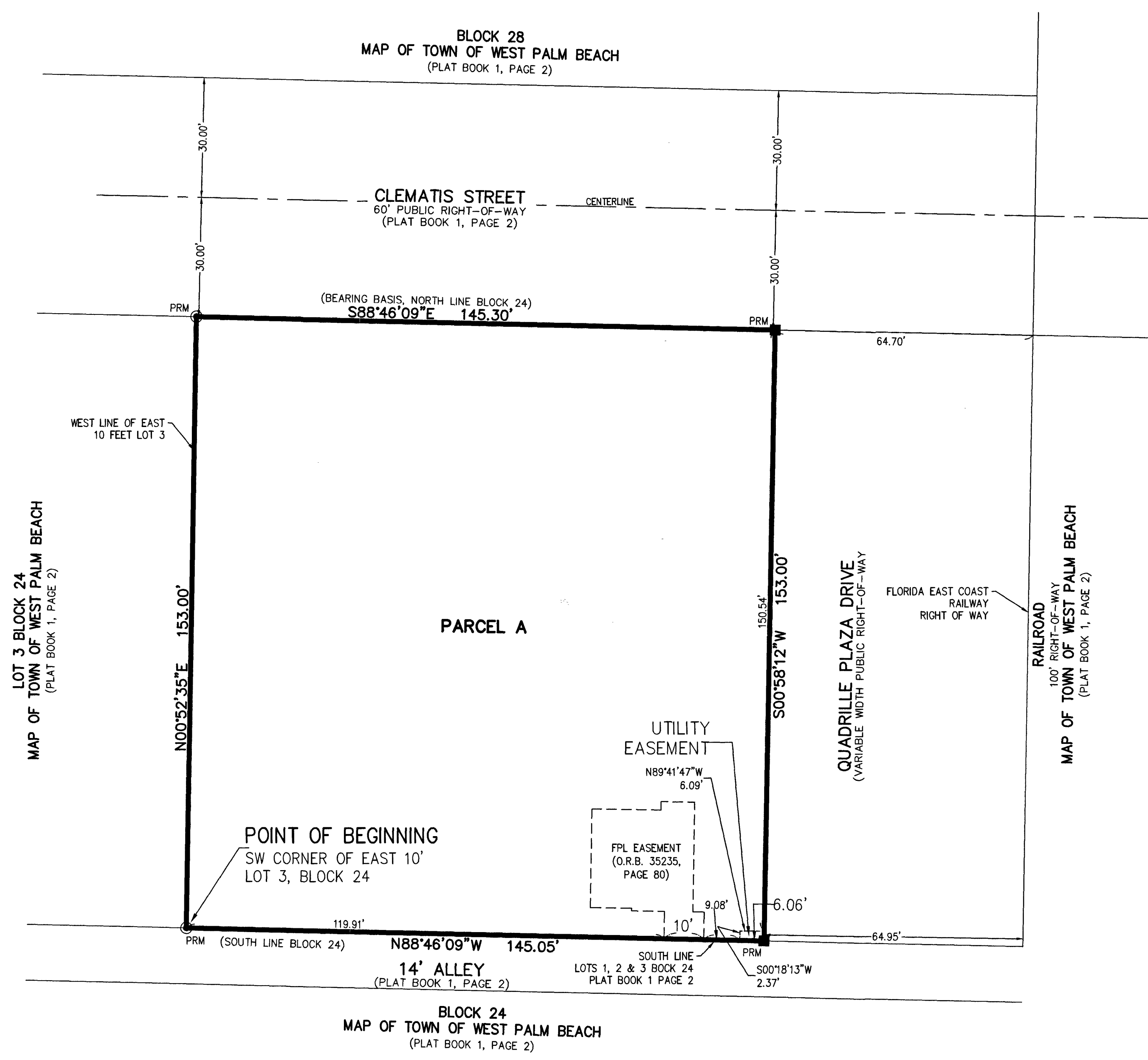


512 CLEMATIS STREET

A REPLAT OF THE WEST 35 FEET OF LOT 1, ALL OF LOT 2 AND A PORTION OF LOT 3, BLOCK 24, MAP OF THE TOWN OF WEST PALM BEACH, ACCORDING TO THE PLAT THEREOF, AS RECORDED IN PLAT BOOK 1, PAGE 2 OF THE PUBLIC RECORDS OF PALM BEACH COUNTY, FLORIDA, LYING IN SECTION 21, TOWNSHIP 43 SOUTH, RANGE 43 EAST, CITY OF WEST PALM BEACH, PALM BEACH COUNTY, FLORIDA.

THIS INSTRUMENT PREPARED BY
DAVID P. LINDLEY
OF
CAULFIELD & WHEELER, INC.
SURVEYORS - ENGINEERS - PLANNERS
7900 GLADES ROAD, SUITE 100
BOCA RATON, FLORIDA 33434 - (561)392-1991
CERTIFICATE OF AUTHORIZATION NO. LB3591



LEGEND AND ABBREVIATIONS:
LB - LICENSED BUSINESS
O.R.B. - OFFICIAL RECORDS BOOK
P.B. - PLAT BOOK
PG - PAGE
P.L.S. - PROFESSIONAL LAND SURVEYOR
R/W - RIGHT-OF-WAY
■ PRM - INDICATES SET PERMANENT REFERENCE MONUMENT; 5/8\"/>